

North East Catchment Management Region

SOURCING SEED – Landholders have the choice of collecting your own seed, or sourcing the appropriate seed from your regional Seedbank or seed collector. The seed must be indigenous to your local area. Be aware that some species have been imported and cause problems when cross breeding with local species, contaminating the local gene pool.

Below are the necessary regional contact details to make sourcing your own seed easy. Your local Landcare group or local council will advise you of the appropriate species for your area and the regional seed bank will tell you what seed is available. Your regional CMA and Landcare facilitators will put you in touch with your local land care group. Greening Australia can provide an extensive list of contact details for seed bank and seed collectors.

The 'Order Form Information Sheet' you received will give you the quantity to order for each seed. If you require TreeProject to send you a species list for your area just contact us and we will send you out a list. However your local landcare group or facilitator will be able to advise you about the particular species you will need for your terrain, soil and other environmental conditions

COLLECTING YOUR OWN SEED - Many landholders choose to collect their own seed, which they send to TreeProject for our volunteers to propagate. Most collect it from their property or local remnant vegetation. If you are collecting seed you will need to identify the species to ensure they are local- and consider local grasses and shrubs as well as trees. Your Regional Landcare Coordinators or the Department of Sustainability and Environment will advise you on collection procedures

For Further Advice and Information

North East Catchment Management Authority

Contact Regional Landcare Coordinator Tom Croft
Ph. 02 6043 7619, Fax 02 6043 7601
Email: tom.croft@necma.vic.gov.au

NECMA Everton Seedbank

Jodie Kurpershoek
1 McKoy St Wodonga Vic 3690
Ph: 02 6043 7600
Mobile: 0417 338 435
Email: seedbank@necma.vic.gov.au

Murray Indigenous Seedbank:

Albury

Tom North
C/- Johnstone Centre Herbarium
PO Box 789 Albury
NSW 2640
Mobile: 0428 506 908

Greening Australia

www.greeningaustralia.org.au
For advice on revegetation activities

Landcare Groups in the Ovens & King catchments

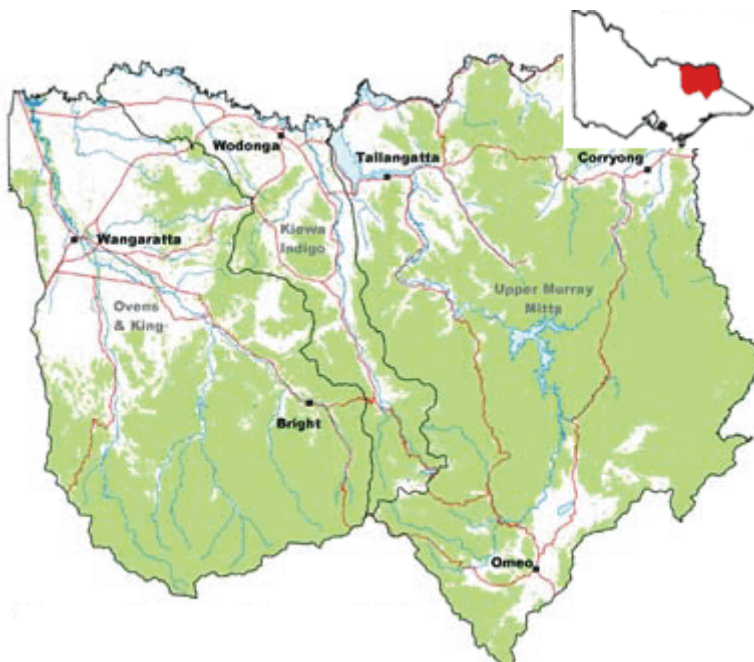
Email: jhermiston@bigpond.com
Ph. 03 5728 2050

Landcare Groups in the Kiewa & Indigo, Mitta and Hume areas

Email: gfmck@bigpond.net.au
Ph 02 6056 1114

Landcare Groups in the Upper Murray area

Email: staffeve@hotmail.net.au
Ph. 02 6021 049



Map of the North East Catchment Area