

Goulburn Broken Catchment Management Region

SOURCING SEED – Landholders have the choice of collecting your own seed, or sourcing the appropriate seed from your regional Seedbank or seed collector. The seed must be indigenous to your local area. Be aware that some species have been imported and cause problems when cross breeding with local species, contaminating the local gene pool.

Below are the necessary regional contact details to make sourcing your own seed easy. Your local Landcare group or local council will advise you of the appropriate species for your area and the regional seed bank will tell you what seed is available. Your regional CMA and Landcare facilitators will put you in touch with your local land care group. Greening Australia can provide an extensive list of contact details for seed bank and seed collectors.

The 'Order Form Information Sheet' you received will give you the quantity to order for each seed. If you require TreeProject to send you a species list for your area just contact us and we will send you out a list. However your local landcare group or facilitator will be able to advise you about the particular species you will need for your terrain, soil and other environmental conditions

COLLECTING YOUR OWN SEED - Many landholders choose to collect their own seed, which they send to TreeProject for our volunteers to propagate. Most collect it from their property or local remnant vegetation. If you are collecting seed you will need to identify the species to ensure they are local- and consider local grasses and shrubs as well as trees. Your Regional Landcare Coordinators or the Department of Sustainability and Environment will advise you on collection procedures.

For Further Advice and Information

Goulburn Broken Catchment Management Authority

Regional Landcare Co-ordinator:

Heather Holder Ph. 03 57611654

Fax: 03 57611628

Email: heatherh@gbcma.vic.gov.au

Website: <http://www.gbcma.vic.gov.au>

Shepparton Office

Suite 4, 55 Welsford St,

Shepparton, VIC, 3630

Ph: 03 5822 2288

Fax: 03 5831 6254

billok@gbcma.vic.gov.au

Yea Office

Shop 5 / 10 High Street Yea 3717

Ph. 03 57972001

Fax: 03 57973199

russellw@gbcma.vic.gov.au

Benalla Office

PO Box 124

Sydney Road

Benalla 3672

Ph. 03 57611675

Fax: 03 57611628

phils@gbcma.vic.gov.au

Tatura Office

Private Bag 1

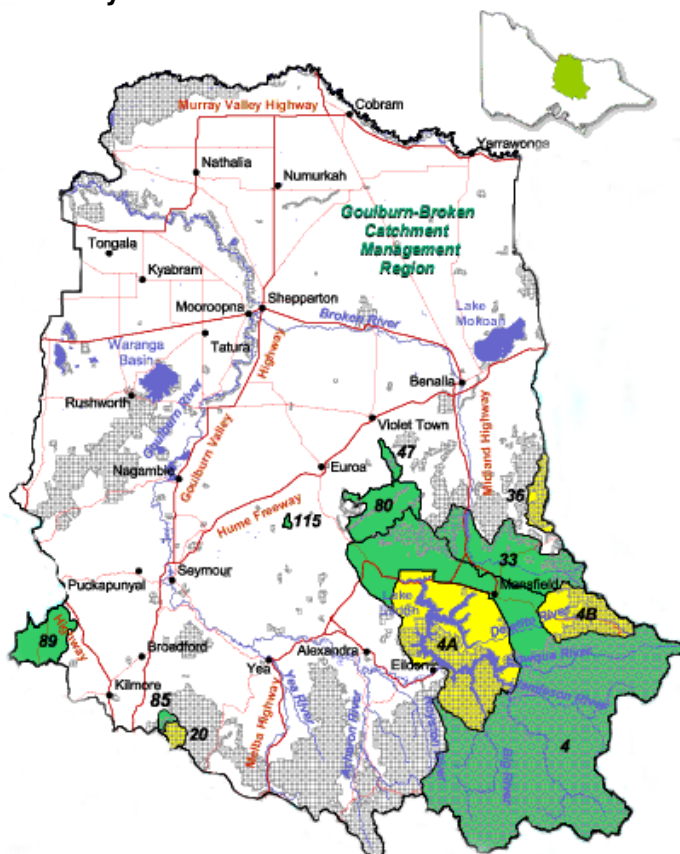
Tatura 3616

Ph: 03 5833 5360

Fax: 03 5833 5971

ken.sampson@dpi.vic.gov.au

Map of the Goulburn Broken



Goulburn Broken Indigenous Seedbank

Dookie College Campus

Ph: 03 5833 9279

Greening Australia

www.greeningaustralia.org.au

For advice on revegetation activities