

East Gippsland Catchment Management Region

SOURCING SEED – Landholders have the choice of collecting your own seed, or sourcing the appropriate seed from your regional Seedbank or seed collector. The seed must be indigenous to your local area. Be aware that some species have been imported and cause problems when cross breeding with local species, contaminating the local gene pool.

Below are the necessary regional contact details to make sourcing your own seed easy. Your local Landcare group or local council will advise you of the appropriate species for your area and the regional seed bank will tell you what seed is available. Your regional CMA and Landcare facilitators will put you in touch with your local land care group. Greening Australia can provide an extensive list of contact details for seed bank and seed collectors.

The 'Order Form Information Sheet' you received will give you the quantity to order for each seed. If you require TreeProject to send you a species list for your area just contact us and we will send you out a list. However your local landcare group or facilitator will be able to advise you about the particular species you will need for your terrain, soil and other environmental conditions

COLLECTING YOUR OWN SEED - Many landholders choose to collect their own seed, which they send to TreeProject for our volunteers to propagate. Most collect it from their property or local remnant vegetation. If you are collecting seed you will need to identify the species to ensure they are local- and consider local grasses and shrubs as well as trees. Your Regional Landcare Coordinators or the Department of Sustainability and Environment will advise you on collection procedures.

For Further Advice and Information

East Gippsland Catchment Management Authority

Regional Landcare Coordinator Darren Williams

Ph: 03 5153 0462

Email: dwilliams@egcma.com.au

Wellington Greenprint

Native Seedbank

Contact Claire McInnes

Ph 5139 0154

Greening Australia

Vince Andreana

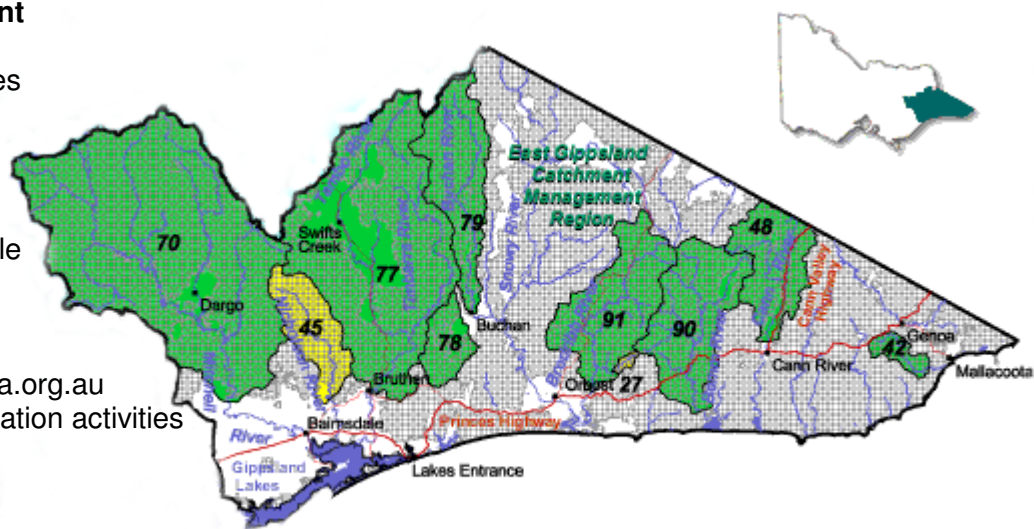
PO Box 487 Bairnsdale

3875

(03) 5152 3099

www.greeningaustralia.org.au

For advice on revegetation activities



Map of the East Gippsland Catchment