

Goulburn Broken Catchment Management Region

SOURCING SEED – Landholders have the choice of collecting your own seed, or sourcing the appropriate seed from your regional Seedbank or seed collector. The seed must be indigenous to your local area. Be aware that some species have been imported and cause problems when cross breeding with local species, contaminating the local gene pool.

Below are the necessary regional contact details to make sourcing your own seed easy. Your local Landcare group or local council will advise you of the appropriate species for your area and the regional seed bank will tell you what seed is available. Your regional Landcare facilitators will put you in touch with your local land care group. Greening Australia can provide an extensive list of contact details for seed bank and seed collectors.

The 'Order Form Information Sheet' you received will give you the quantity to order for each seed. If you require TreeProject to send you a species list for your area just contact us and we will send you out a list. However, your local landcare group or facilitator will be able to advise you about the particular species you will need for your terrain, soil and other environmental conditions

COLLECTING YOUR OWN SEED - Many landholders choose to collect their own seed, which they send to TreeProject for our volunteers to propagate. Most collect it from their property or local remnant vegetation. You will need a license if you are collecting seed off your property. You will need to identify the species to ensure they are local- and consider local grasses and shrubs as well as trees. Your Regional Landcare Coordinators or the Department of Sustainability and Environment will advise you on collection procedures and licenses if needed.

Map of the Goulburn Broken

For Further Advice and Information

Upper Goulburn Landcare Network

Sarah Roberts/Cathy Olive
Landcare Coordinator
PO Box 74, Yea 3717
Ph: 03 5736 0105
uglandcare@gbcma.vic.gov.au

South West Goulburn Landcare

Ian Julian
Ph: 5734 6357
mob: 0409 515 630
swg-landcare@mitchellshire.vic.gov.au

Goulburn Murray Network Landcare

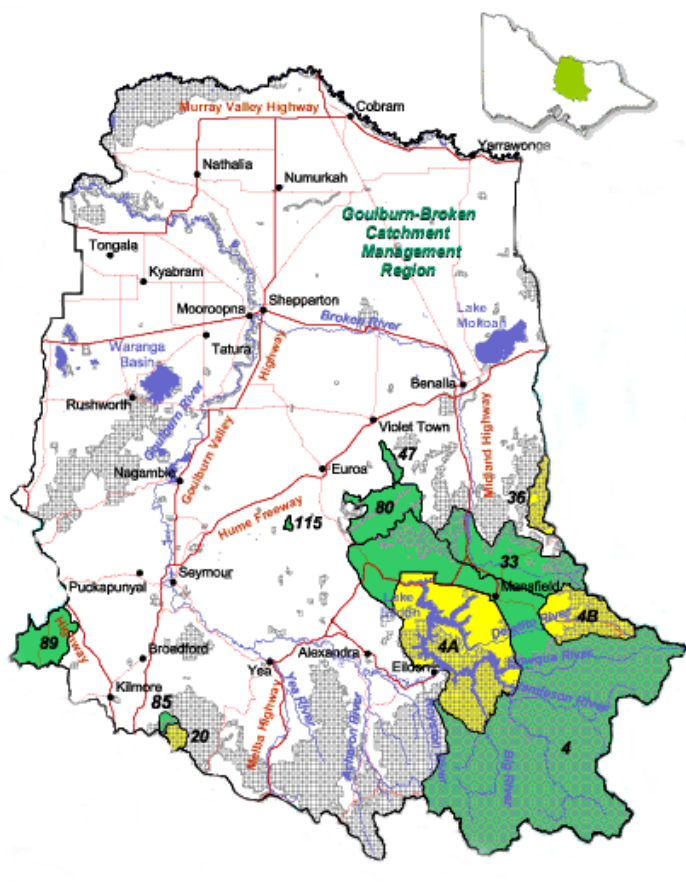
Marg Watters
82 Wyndham St
Shepparton 3630
Ph: 03 58321133
Mob: 0447321140
<http://www.landcarevic.net.au>

DPI Landcare Communication For Shepparton Irrigation Region

Nicki Freeman
Ph: 58335370

Mansfield Landcare Network

Melanie Landcare Coordinator
Mob: 0429 148 828



Goulburn Broken Indigenous Seedbank

Ms Liz Evans - Dookie College Campus
eev@unimelb.edu.au
Ph: 03 5833 9279 Fax: 03 5833 9201